



NODO

TRANSCENDING LIVING



**D'STER**

ONE-STOP REALTY INVEST





# Your *ascent* begins.



Time to reintegrate,  
to reconnect with the source.

We have tirelessly searched for a  
space to achieve this.

A place where to meet our origin  
and the way toward our  
destination:

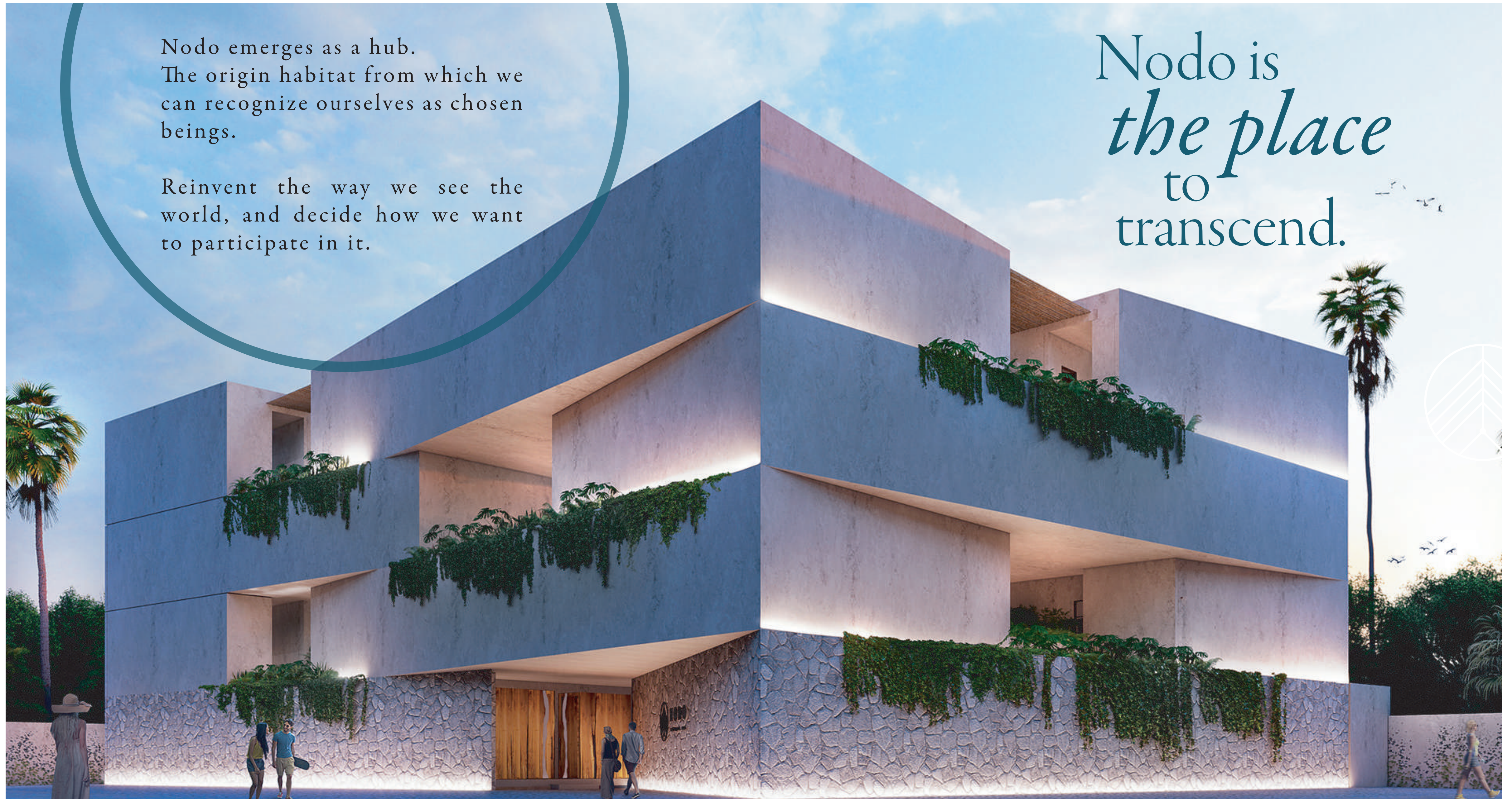
**From earth to the stars.**



Nodo emerges as a hub.  
The origin habitat from which we  
can recognize ourselves as chosen  
beings.

Reinvent the way we see the  
world, and decide how we want  
to participate in it.

Nodo is  
*the place*  
to  
transcend.





# *Tulum* the pathway.

Tulum is a privileged point on earth.

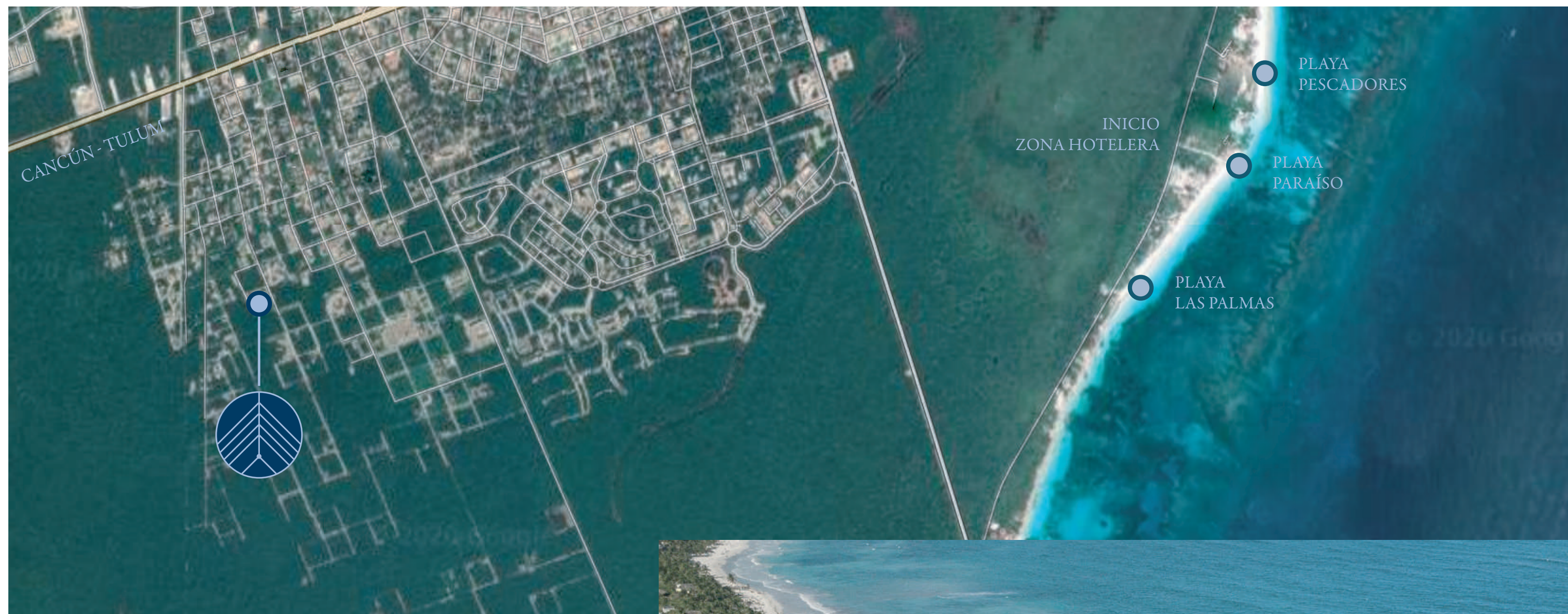
The place that the Mayan civilization chose to build one of the most relevant cities of its culture.

Today after almost 500 years, Tulum retains a desirable spirit, an aura that attracts people from all corners of the world.

Its cosmopolitan atmosphere and vibe surrounded by its sterling natural environment, fascinates locals and strangers, who eagerly seek to soak up its essence.





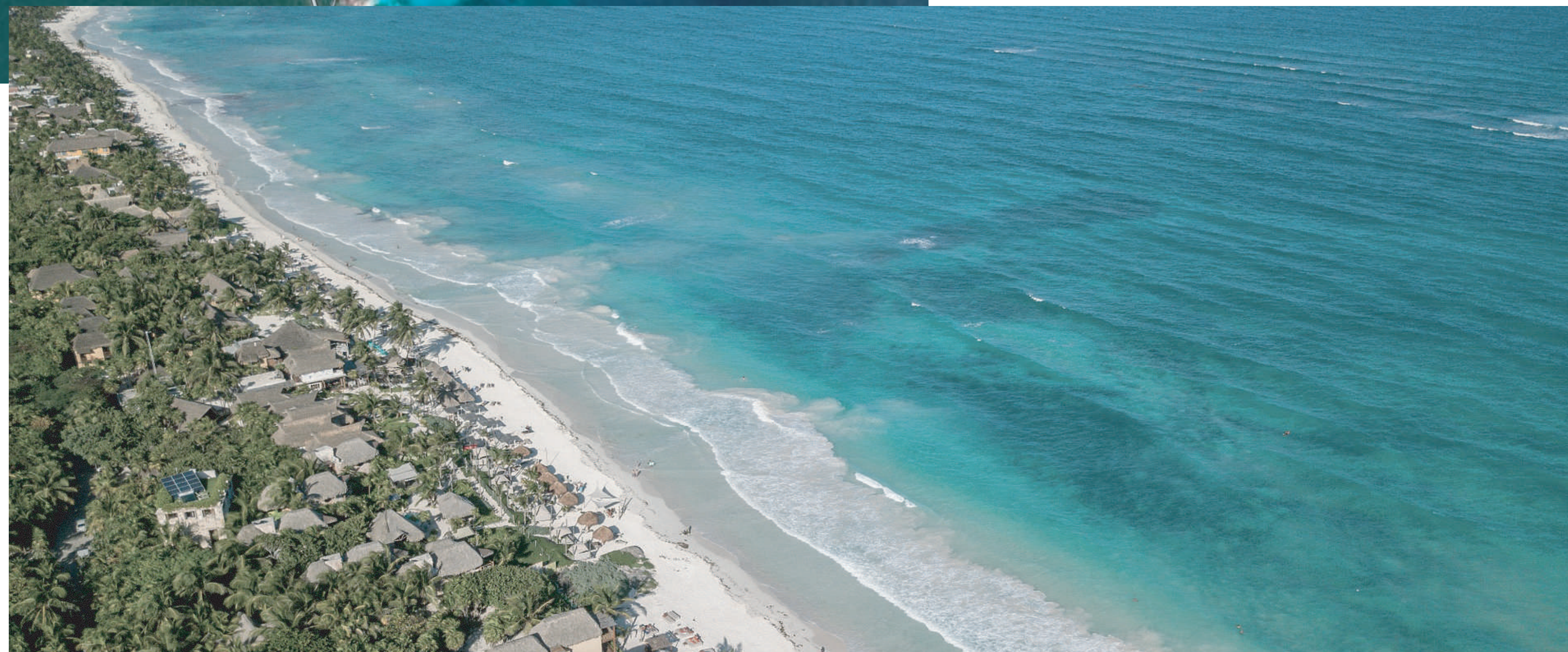


- Advantageous proximity to natural attractions such as turquoise water cenotes and idyllic beaches.
- Surrounded by an exciting dining scene.

Located in La Veleta, an emerging residential and touristic district, ideal as a retirement home or investment.

*The perfect mix.*

For su location Nodo offers a mix of privacy and leisure.





“We yearn to return to  
the origin, recognize  
ourselves and reach the  
highest.”

*1 and 2*  
bedroom  
apartments  
*and studios.*



**NODO**  
TRANSCENDING LIVING





# Jungle *garden.*

Perfect symbiosis between  
architecture and nature.  
Artistic display, where we  
hear the call.



*Mystic*  
natural  
atmosphere.







# *Outdoor* amenities.

- Infinity pool with sun deck
- Waterfall, natural pool and swimming lane
- Hamaca zone
- Fire pit



# *Indoor* amenities.

- The Cave
- Hidden Spa
- Magma Gym







# The *cave*

Sacred enclave where the  
connection between the earthly  
and the heavenly is created.

The refuge where we link to  
transcend.



High-end,  
laid back &  
*luxury living.*





“Each person is a singular  
universe, each life a path  
unlike any other.”

At Nodo, each habitat is **UNIQUE**.  
Every apartment has a different  
layout to match the rhythm of its  
inhabitants.





Just as the brightest stars in the celestial sphere radiate energy,  
three different auras, that connect with unique lifestyles,  
arise from Nodo.

The  
*studio*

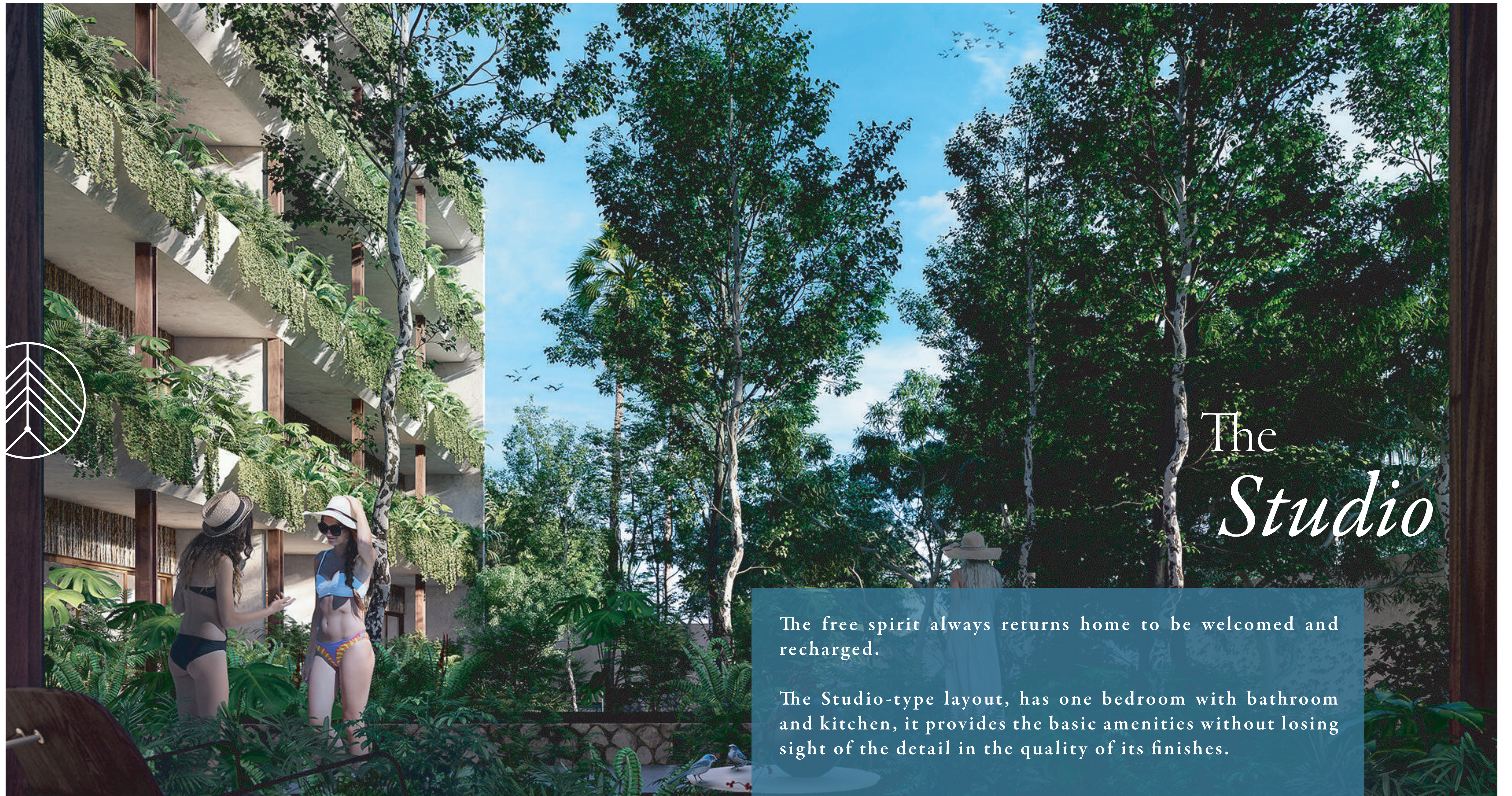
The  
*one*

The  
*two*

The  
*top*







# The *Studio*

The free spirit always returns home to be welcomed and recharged.

The Studio-type layout, has one bedroom with bathroom and kitchen, it provides the basic amenities without losing sight of the detail in the quality of its finishes.





# *The Studio*

## Master plan location



Level 1

105

33.25 sqm



33.25 sqm  
Interior



1 Bedroom

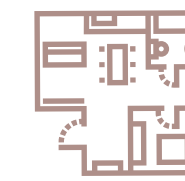


1 Bathroom

Level 2

205

32.25 sqm



32.25 sqm  
Interior



1 Bedroom



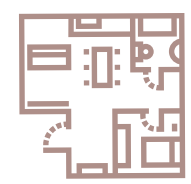
1 Bathroom



Level 3

305

33.25 sqm



33.25 sqm  
Interior



1 Bedroom

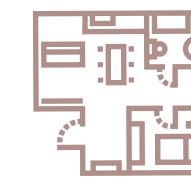


1 Bathroom

Level 4

405

31.64 sqm



31.64 sqm  
Interior



1 Bedroom



1 Bathroom





# The *One*

Intended to be a peaceful retreat after a day of exploring paradise.

Its multiform terrace frames this bright model that consists of a large ensuite bedroom and comfortable living room.

The perfect balance between comfort and functionality.



# *The One*

Master plan location

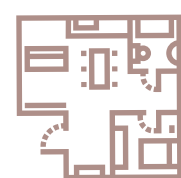




Level 1

102

61.31 sqm



**44.13** sqm  
Interior



**17.18** sqm  
Terrace



**1** Bedroom

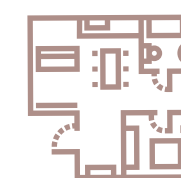


**1** Bathroom

Level 1

103

56.15 sqm



**44.13** sqm  
Interior



**12.02** sqm  
Terrace



**1** Bedroom



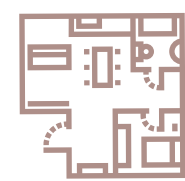
**1** Bathroom



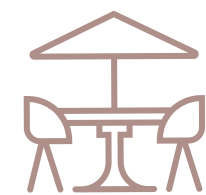
Level 2

201

93.84 sqm



48.26 sqm  
Interior



45.58 sqm  
Terrace



1 Bedroom

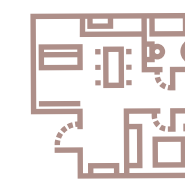


1 Bathroom

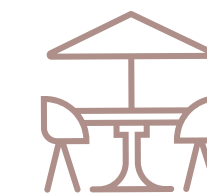
Level 2

203

80.64 sqm



53.15 sqm  
Interior



24.76 sqm  
Terrace



1 Bedroom



1 Bathroom  
1 Walk-in Closet

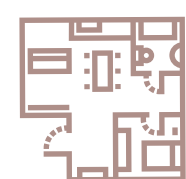


Level 2

204

78.47sqm

ADD  
THE STUDIO  
**205**  
AND EXPAND  
YOUR  
APARTMENT



**44.05** sqm  
Interior



**34.42** sqm  
Terrace



**1** Bedroom

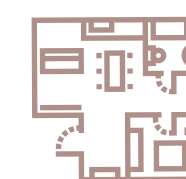


**1** Bathroom

Level 3

302

69.01 sqm



**51.80** sqm  
Interior



**17.21** sqm  
Terrace



**1** Bedroom



**1** Bathroom



# The *Two*

Grand and exuberant, the ideal space to enjoy yourself and nature.

This model offers 2 spacious ensuite bedrooms, one of them in lock-off, joined by a central living room with a panoramic view towards the terrace.







# *The Two*

Master plan location



Level 1

101

101.14 sqm



75.71 sqm  
Interior



25.43 sqm  
Terrace



1 Bedroom  
1 Lock Off

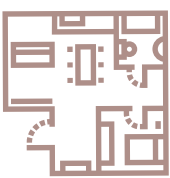


2 Bathrooms  
1 Walk-in Closet

Level 1

104

83.21 sqm



64.27 sqm  
Interior



18.94 sqm  
Terrace



1 Bedroom  
1 Lock Off



2 Bathrooms

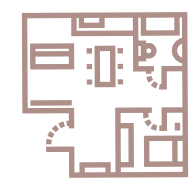
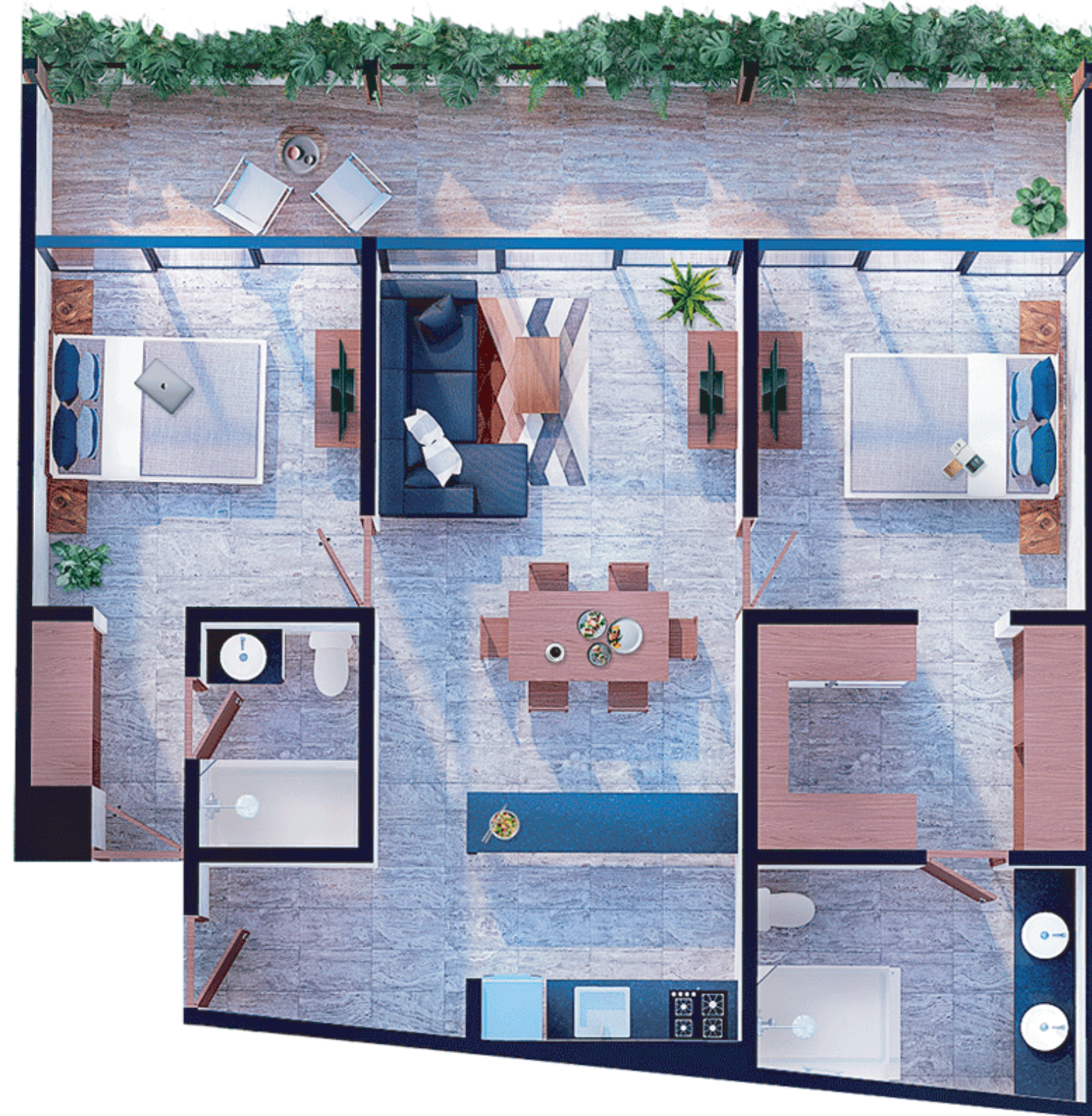
ADD  
THE STUDIO  
**105**  
AND EXPAND  
YOUR  
APARTMENT



Level 2

202

107.23 sqm



82.15 sqm  
Interior



25.08 sqm  
Terrace



1 Bedroom  
+  
1 Lock Off

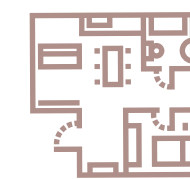


2 Bathrooms  
+  
1 Walk-in Closet

Level 3

301

93.84 sqm



68.41 sqm  
Interior



25.43 sqm  
Terrace



1 Bedroom  
+  
1 Lock Off



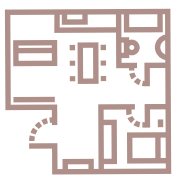
2 Bathrooms



Level 3

303

143.07 sqm



78.27 sqm  
Interior



64.8 sqm  
Terrace



1 Bedroom  
+  
1 Lock Off

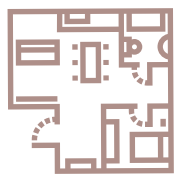


2 Bathrooms  
+  
1 Walking-in Closet

Level 3

304

89.52 sqm



64.27 sqm  
Interior



25.25 sqm  
Terrace



1 Bedroom  
+  
1 Lock Off



2 Bathrooms

ADD  
THE STUDIO  
**305**  
AND EXPAND  
YOUR  
APARTMENT





## The *Top*

With an intimate setting and surrounded by luxurious amenities this space is dedicated to maximum enjoyment

Inhabiting The Top, connects you to the sky through a private Rooftop, located on its second level, with a pool, bar and grill.

Choose between one or two bedrooms, and live high up.





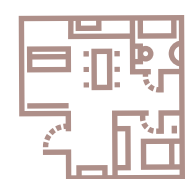
*The Top*  
Master plan location



Level 4

401

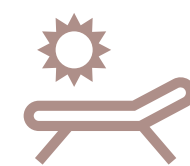
138.46 sqm



48.27 sqm  
Interior



39.08 sqm  
Terrace



51.11 sqm  
Roof Top



1 Bedroom



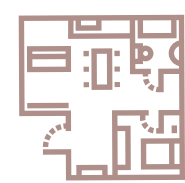
1 Bathroom



Level 4

402

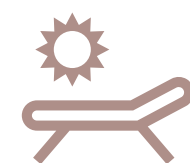
180.42 sqm



**79.44** sqm  
Interior



**31.46** sqm  
Terraza



**69.52** sqm  
Roof Top



**1** Bedroom  
**1** Lock Off



**2** Bathrooms  
**1** Walk-in Closet



Level 4

403

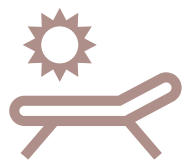
170.47 sqm



73.80 sqm  
Interior



42.15 sqm  
Terrace



52.52 sqm  
Roof Top



1 Bedroom  
1 Lock Off



2 Bathrooms  
1 Walk-in Closet

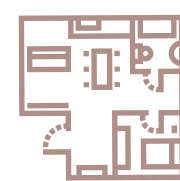


Level 4

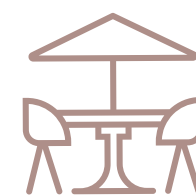
404

153.01 sqm

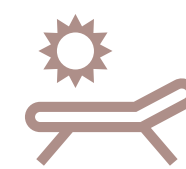
ADD  
THE STUDIO  
**405**  
AND EXPAND  
YOUR  
APARTMENT



**64.26** sqm  
Interior



**25.26** sqm  
Terrace



**63.49** sqm  
Roof Top



**1** Bedroom  
**1** Lock Off



**2** Bathrooms





Made by  
*the best*

**MIKA**

DEVELOPMENT • STRATEGY • ARCHITECTURE

MIKA is behind the vision for Nodo, creating innovative, responsible and adapted concepts in a respectful way with their environment, in Mexico and in the world.



# Live your own *private retreat*

You are close to belonging to the Nodo, an oasis full of life and delight. We invite you to know it. Schedule a tour with one of our advisors and visit what **may be the perfect space to reach your own destiny.**

	HITCH	FINANCED	DELIVERY
CASH	90%	0%	10%
CREDIT (6 MONTHS WITHOUT INTEREST)	20%	70% (to 6 months)	10%
CONSTRUCTION CREDIT	30%	60% (during construction)	10%





# D'STER

ONE-STOP REALTY INVEST



[www.DsterInvestland.com](http://www.DsterInvestland.com)