



STARTING AT \$164,500 USD



REAL ESTATE DEVELOPER

ZAMIRA CONDOS



REAL ESTATE BORKER

AWAKEN YOUR SENSES

We've created spaces that are filled with harmony and peace, where time doesn't exist. We are inspired by nature and you'll feel this throughout the project, no matter where you are. We have made it our objective that wherever you look you will find a connection with the sky, the sea, the sand, and the jungle.

THE PARADISE THAT YOU HAVE BEEN LOOKING FOR

From your condo's private terrace, you can see your new garden, the jungle. Take the elevator to reach the common rooftop area with pool & sun chairs, perfect for relaxing or having fun. As a homeowner, you will have exclusive access to our premium amenities: TAO Wellness Center, yoga classes, meditation and mantra sessions in Satyarūpā Yoga Retreat, discounts in our Jungle Fish Beach Club, and Day/Night Pass at the Grand Sirenis Hotel.

RENT YOUR CONDO THROUGH AIRBNB

Increase your income while you are not using your condo with our lock-off floorplan. Choose if you want to rent it out as 1 or 2 separate units to maximize your rental potential.



2 Bed



2 Bath



Terrace



Swimming Pool



Elevator



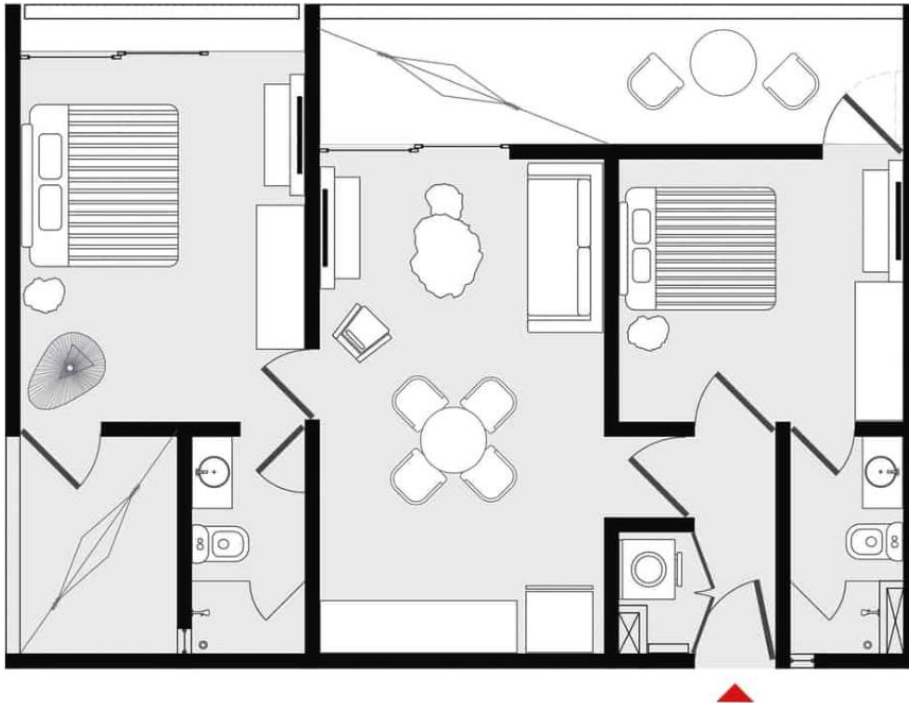






FLOORPLANS

ZAMIRA TYPE A 101,102,201,202



AREAS

TOTAL
899.22 ft²
83.54 m²

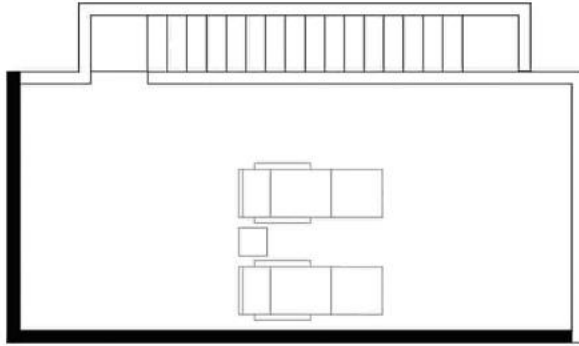
INTERIOR
778.77 ft²
72.35 m²

TERRACE
120.45 ft²
11.19 m²

2 
BEDROOMS

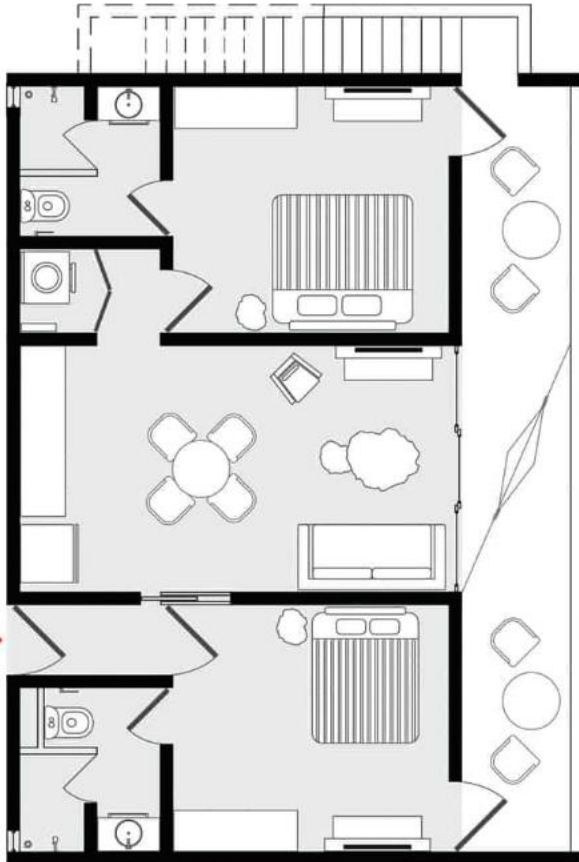
2 
BATHROOMS

The developer keeps the right to do minor changes to the project
El desarrollador se reserva el derecho de realizar cambios menores en el proyecto



ZAMIRA PH TYPE B

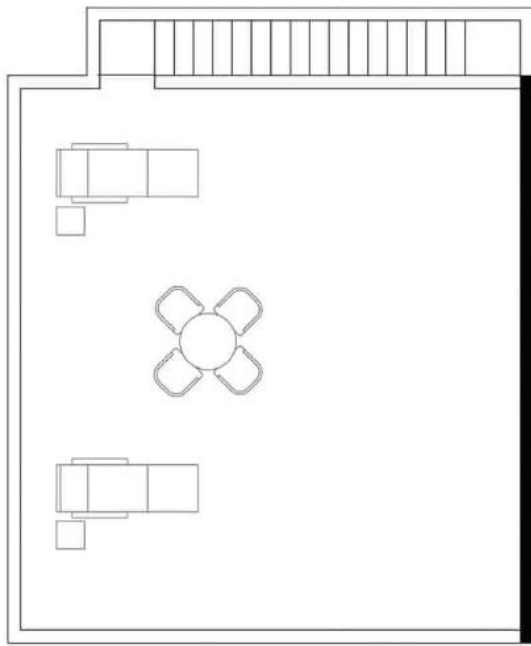
303,304



AREAS

| TOTAL | INTERIOR | TERRACE | ROOFTOP | 2  | 2  |
|--|--|--|--|---|---|
| 1278.21 ft ² 118.75 m ² | 735.07 ft ² 68.29 m ² | 182.23 ft ² 16.93 m ² | 360.91 ft ² 33.53 m ² | BEDROOMS | BATHROOMS |

The developer keeps the right to do minor changes to the project
El desarrollador se reserva el derecho de realizar cambios menores en el proyecto



ZAMIRA PH TYPE A

301,302

AREAS

TOTAL
1572.61 ft²
146.10 m²

INTERIOR
778.77 ft²
72.35 m²

TERRACE
120.45 ft²
11.19 m²

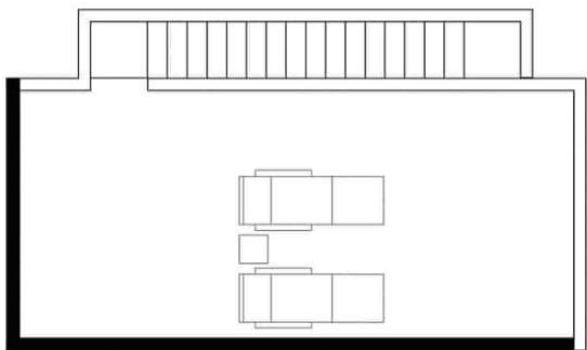
ROOFTOP
673.39 ft²
62.56 m²

2 
BEDROOMS

2 
BATHROOMS

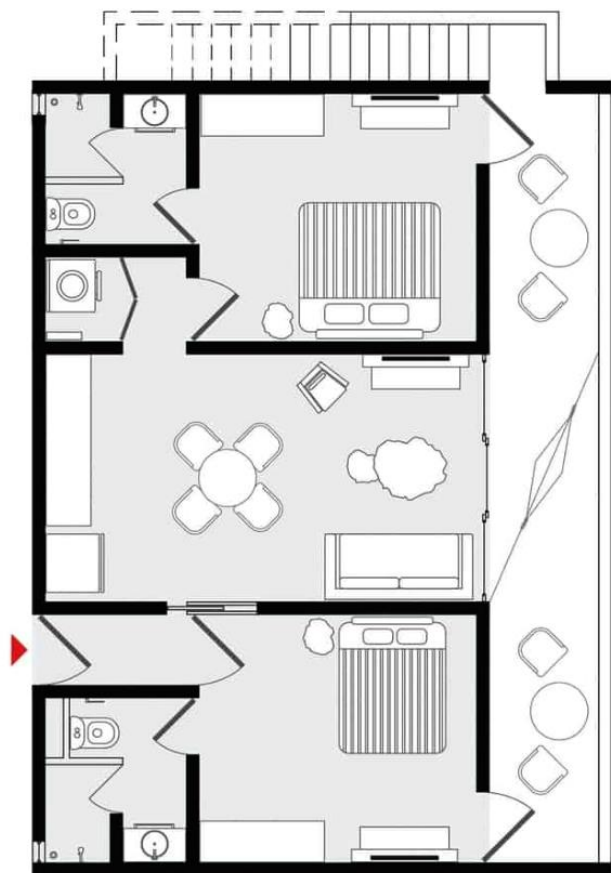


The developer keeps the right to do minor changes to the project
El desarrollador se reserva el derecho de realizar cambios menores en el proyecto



ZAMIRA PH TYPE B

303,304



AREAS

TOTAL
1278.21 ft²
118.75 m²

INTERIOR
735.07 ft²
68.29 m²

TERRACE
182.23 ft²
16.93 m²

ROOFTOP
360.91 ft²
33.53 m²

2 
BEDROOMS

2 
BATHROOMS

The developer keeps the right to do minor changes to the project
El desarrollador se reserva el derecho de realizar cambios menores en el proyecto

THIS PROPERTY IS INSIDE

SIRENIS COMPLEX

Since its foundation, TAO Mexico has been developing wonderful real estate opportunities inside the Grand Sirenis complex. Its architecture, offering spacious scenarios, which perfectly blends nature with open spaces.

La Selva, El Bosque, and La Luna, are three of the several condos we have designed, which blend harmoniously with the lush natural surroundings of the Mayan Jungle creating a perfect flow between indoor & outdoor spaces. The Grand Sirenis is located on a beautiful stretch of undeveloped beach, where you can relax and enjoy the fresh and serene atmosphere or have a swim in one of the most beautiful spots for lovers of snorkeling.

Condo residents may access the Grand Sirenis' Hotel amenities at preferential prices. Besides, it is an 8-minute drive away from our Jungle Fish Beach Club and a 10-minute drive from beautiful TAO Wellness Center.

There is also a 24 -hour mini market (Oxxo) located inside the complex for your convenience.

ABOUT THE LOCATION

The Grand Sirenis Complex is situated in the Riviera Maya, just an hour south of the Cancun airport, and 32 km from Playa del Carmen.

It is a privileged, totally exclusive, and incredibly private area with 24/7 security.

LIFESTYLE

As a homeowner of this community you have also access to:



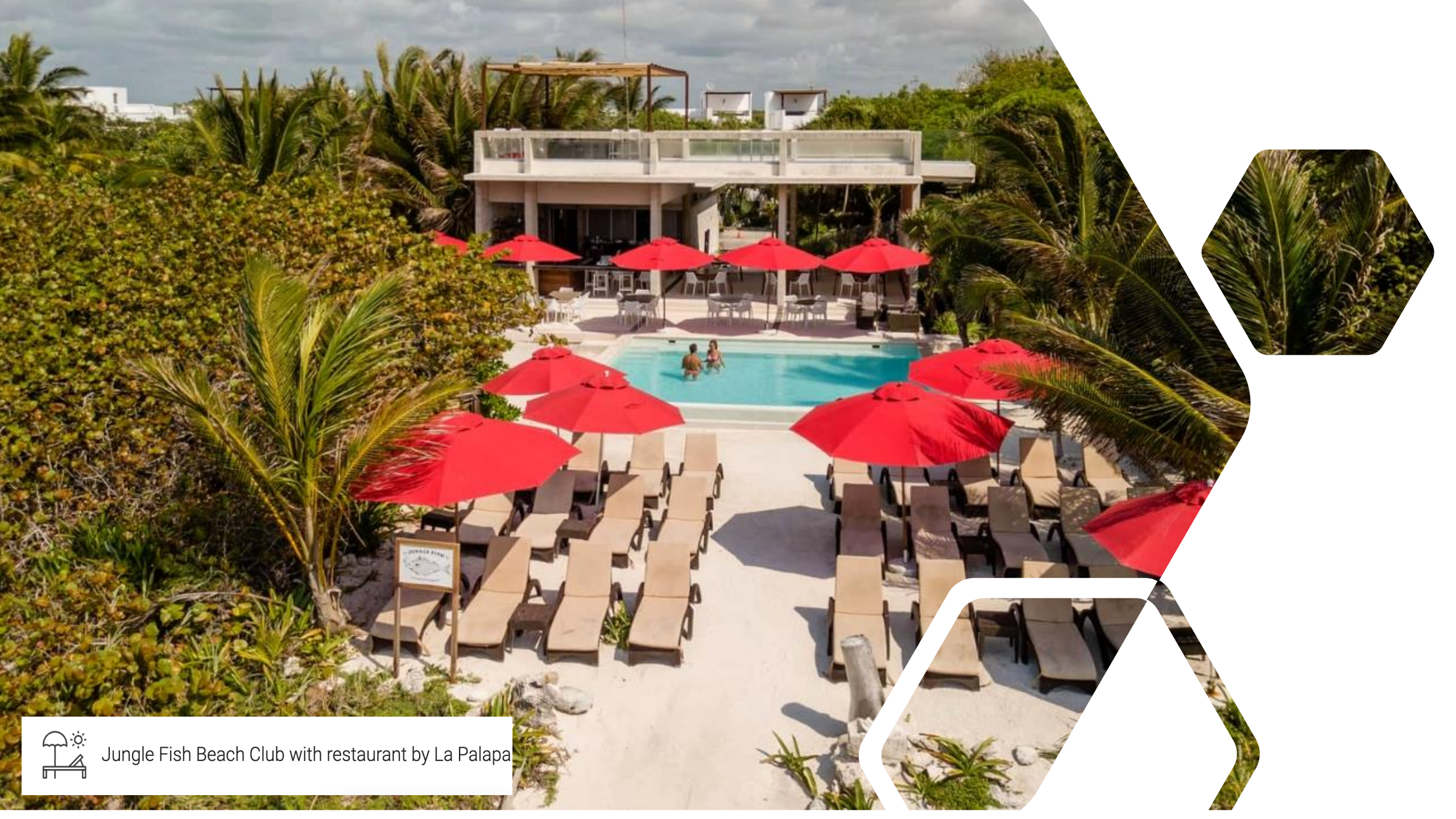
TAO Wellness Center



Jungle Fish Beach Club with restaurant by La Palapa

TAO Wellness Center is an architectural masterpiece that blends perfectly with the jungle. A sanctuary for health, relaxation and soothing of the body, mind and spirit.





Jungle Fish Beach Club with restaurant by La Palapa



Jungle Fish Beach Club with restaurant by La Palapa



PROPIEDADES EN AKUMAL,
RESIDENCIAL GRAND SIRENIS
DESDE \$164,500 USD



**FINANCIAMIENTO DIRECTO
A EXTRANJEROS**

Deposito de reserva: **\$ 5,000 USD**

- ♦ **15%** Enganche
- ♦ **25%** Durante el tiempo de construcción
- ♦ **60%** Financiamiento, pagos* menores a \$1000 USD
(Por **10 años** al **7.9%** interés)

* pagos mensuales y pagos anuales diferidos

sanabria@taomexico.com

DISCOVERY WEEKEND!

COME TO SEE OUR PROJECTS FIRSTHAND



Every month, we organize two special Discovery Weekend events, hosted by our Real Estate Advisors.

These unforgettable weekends are designed to focus on the ease and secure process of purchasing a property and investing in México.

If during the Discovery Weekend you reserve a property, and once the sale is formally closed, **we will refund back to you \$1,000.00 USD** as compensation toward the cost spent to come down on the weekend.

- \$ 345 USD per person (Last days)
- 3 Nights & 4 Days
- Accommodation
- Food & Drinks included



D'STER
INVESTLAND

Contact:

info@investland.com.mx

Of. México: Edificio Diomeda (Cancún) Centro Empresarial Tulum (Tulum)

Tels: +52.998.2954657 y/o +52.984.871.38.24

Cel: +52.998.2752899

Financial & Real Estate Strategies